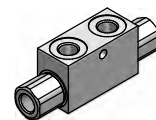
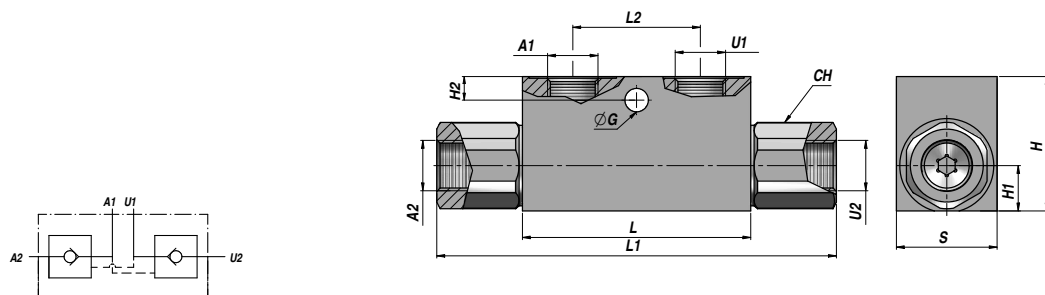


**CLAPET ANTI-RETOUR PILOTE (ETANCHEITE PAR CONE)**  
PILOT OPERATED CHECK VALVE (POPPET TYPE)  
VALVULA ANTIRRETORNO PILOTADO (ASIENTO CONICO)

**DOUBLE EFFET**  
DOUBLE ACTING  
DOBLE EFECTO

**VRDE-F...FF**



Code Code Código	A1 - U1 BSP	A2 - U2 BSP	Q MAX l/min	P MAX bar	PILOT RATIO	Type Type Tipo	L max	L1	L2	ØG	H2	CH	H1	H	S	kg
VSG312.F00404	1/8"	1/8"	20	350	1:4	VRDE-F 005 FF	53	86	20	-	-	17	11	30	20	0,30
VSG312.F10454	1/4"	1/4"	30	350	1:4,5	VRDE-F 010 FF	68	118	38	7	7	24	13	40	30	0,69
VSG312.F15454	3/8"	3/8"	30	350	1:4,5	VRDE-F 015 FF	68	118	38	7	7	24	13	40	30	0,64
VSG312.F20404	3/8"	3/8"	50	300	1:4	VRDE-F 020 FF	80	144	40	8,5	15	27	16	50	30	0,98
VSG312.F25404	1/2"	1/2"	50	300	1:4	VRDE-F 025 FF	80	144	40	8,5	15	27	16	50	30	0,91
VSG312.F30404	1/2"	1/2"	80	300	1:4	VRDE-F 030 FF	90	171	40	8,5	15	30	20	60	40	1,72
VSG312.F40404	3/4"	3/4"	120	300	1:4	VRDE-F 040 FF	107	196	60	8,5	16	41	23	70	50	3,11

Pression d'ouverture - Opening pressure - Presión de abertura: bar 0,5 - 4 (Standard) - 8

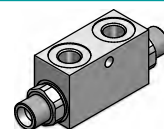
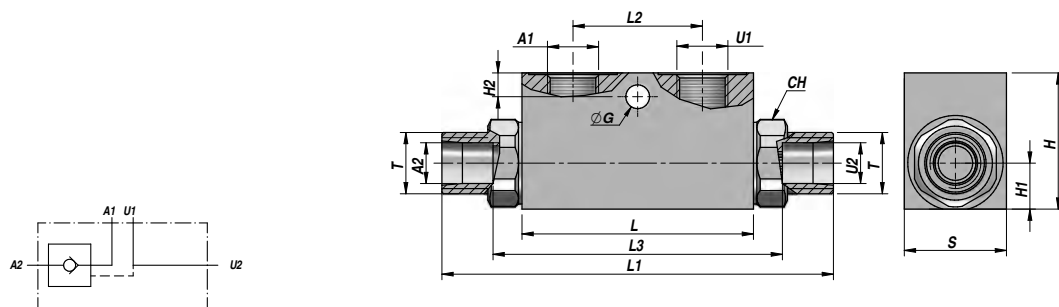
MONTAGE SUR VERIN  
CYLINDER MOUNTING  
MONTAJE SOBRE EL CILINDRO

MATERIEL - MATERIAL: ACIER - STEEL - ACERO

**CLAPET ANTI-RETOUR PILOTE DIN 2353 (ETANCHEITE PAR CONE)**  
PILOT OPERATED CHECK VALVE DIN 2353 (POPPET TYPE)  
VALVULA ANTIRRETORNO PILOTADO DIN 2353 (ASIENTO CONICO)

**SIMPLE EFFET**  
SINGLE ACTING  
SIMPLE EFECTO

**VRSE-AZ...FF**



Code Code Código	A1 - U1 BSP	A2 - U2	T	Q MAX l/min	P MAX bar	PILOT RATIO	Type Type Tipo	L max	L1	L2	L3	ØG	H2	CH	H1	H	S	kg
VSG321.F10454	1/4"	Ø12	M18x1,5	30	350	1:4,5	VRSE-AZ 010 FF	68	138	38	86	7	7	24	13	40	30	0,67
VSG321.F15454	3/8"	Ø12	M18x1,5	30	350	1:4,5	VRSE-AZ 015 FF	68	138	38	86	7	7	24	13	40	30	0,66
VSG321.F20404	3/8"	Ø15	M22x1,5	50	300	1:4	VRSE-AZ 020 FF	80	166	40	108	8,5	15	27	16	50	30	0,97
VSG321.F25404	1/2"	Ø15	M22x1,5	50	300	1:4	VRSE-AZ 025 FF	80	166	40	108	8,5	15	27	16	50	30	0,91
VSG321.F30404	1/2"	Ø18	M26x1,5	80	300	1:4	VRSE-AZ 030 FF	90	180	40	133	8,5	15	30	20	60	40	1,67

Pression d'ouverture - Opening pressure - Presión de abertura: bar 0,5 - 4 (Standard) - 8

SANS ECROU ET BAGUE DE SERRAGE - WITHOUT NUT AND CUTTING RING - SIN TUERCA Y CORONA CORTANTE

MONTAGE SUR VERIN  
CYLINDER MOUNTING  
MONTAJE SOBRE EL CILINDRO

MATERIEL - MATERIAL: ACIER - STEEL - ACERO

ACCESSOIRES: VOIR PAGE 112  
ACCESSORIES: SEE PAGE 112  
ACCESORIOS: VER PAGINA 112