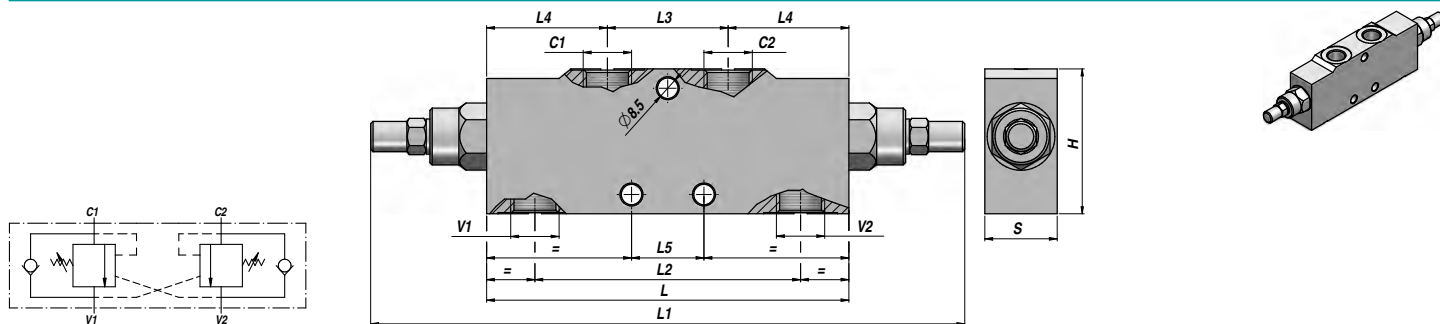


VALVE D'EQUILIBRAGE
OVERCENTER VALVE
VALVULA OVERCENTER

DOUBLE EFFET
DOUBLE ACTING
DOBLE EFECTO

VBCD/A DE



Code Code Código	V1 - V2 BSP	C1 - C2 BSP	Q MAX l/min	P MAX bar	PILOT RATIO	Type Type Tipo	L	L1	L2	L3	L4	L5	L6	H1	H2	H	S	kg
V2290.A400	1/4"	1/4"	20	350	1:4,5	VBCD/A DE 1/4"	150	248	110	50	50	30	44	32	28	60	30	1,97
V2290.A600	3/8"	3/8"	40	350	1:4,5	VBCD/A DE 3/8"	150	248	110	50	50	30	44	32	28	60	30	1,94
V2290.A800	1/2"	1/2"	60	350	1:4,5	VBCD/A DE 1/2"	150	248	110	50	50	30	44	32	28	60	30	1,89
V2290.A120	3/4"	3/4"	95	350	1:5,5	VBCD/A DE 3/4"	190	320	143	65	62,5	44	64	40	40	80	35	3,82

Réglage standard - Standard setting - Reglaje estandar : 320 bar
Réglage Minimum - Minimum setting - Reglaje mínimo : 120 bar

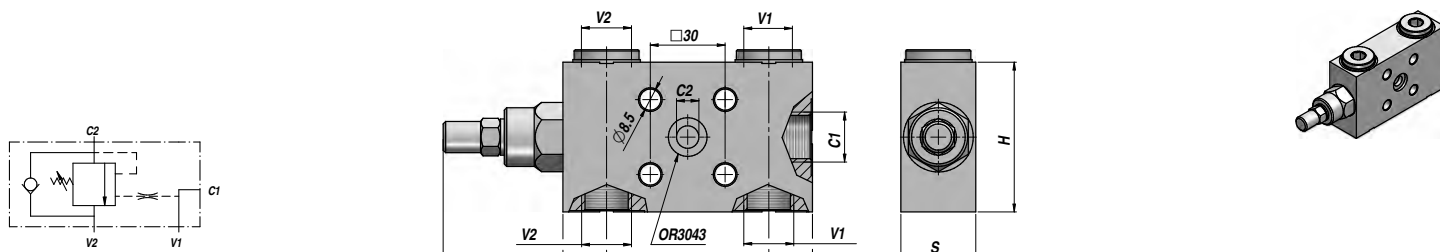
MONTAGE EN LIGNE
LINE MOUNTING
MONTAJE EN LINEA

MATERIEL - MATERIAL: ACIER - STEEL - ACERO

VALVE D'EQUILIBRAGE
OVERCENTER VALVE
VALVULA OVERCENTER

SIMPLE EFFET

VBCD/FL SE



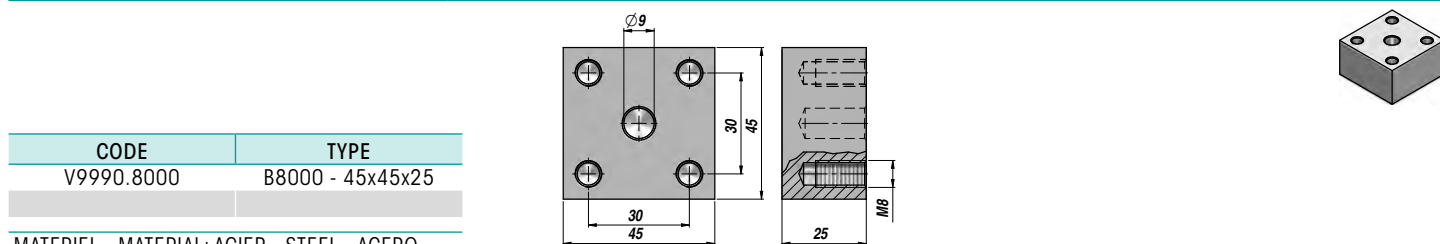
Code Code Código	V1 - V2 BSP	C1 BSP	C2	Q MAX l/min	P MAX bar	PILOT RATIO	Type Type Tipo	L	L1	L2	H	S	kg
V2190.B600	3/8"	3/8"	Ø9	40	350	1:4,5	VBCD/FL SE 3/8"	100	149	60	60	30	1,25
V2190.B800	1/2"	1/2"	Ø9	60	350	1:4,5	VBCD/FL SE 1/2"	100	149	65	60	30	1,21

Réglage standard - Standard setting - Reglaje estandar : 320 bar
Réglage Minimum - Minimum setting - Reglaje mínimo : 120 bar

FLASQUABLE
FACE MOUNTING
MONTAJE CON PLACA

MATERIEL - MATERIAL: ACIER - STEEL - ACERO

Embase pour VBCD...FL/SE - Sub-plate for VBCD...FL/SE - Placa base para VBCD...FL/SE



CODE	TYPE
V9990.8000	B8000 - 45x45x25

MATERIEL - MATERIAL: ACIER - STEEL - ACERO